

# DRUM PUMPS

FOR EACH LIQUID  
THE RIGHT DRUM PUMP

**Big power  
light weight**

**Eccentric screw drum pumps**



**Grease,  
cremes, non  
flowable media**

**High pressure drum pumps**



**g**<sup>®</sup>  
grün-pumpen  
take out, what's in

## Traditional drum pumps

### Drum pumps with mechanical seal



<b>Applications</b>	<b>PP</b> for aggressive liquids like acids, caustics, vegetable oils, paints ... <b>PVDF</b> highly aggressive liquids like concentrated or mixed acids, ... <b>SS</b> acids, caustics, fruit-juices, milk, paints, thin-bodied oils, ...
<b>Pump tubes</b>	<b>tube:</b> polypropylene ( <b>PP</b> ), polyvinylidene fluoride ( <b>PVDF</b> ), stainless steel ( <b>SS</b> ) <b>seal:</b> mechanical seal <b>immersion depth:</b> 700, 1000, 1200 mm and special immersion depth
<b>Drive motors</b>	<b>electrical:</b> p310 = 520 Watt, 230 Volt / 50 Hz, 115 Volt / 60 Hz p400 = 850 Watt, 230 Volt / 50 Hz, 115 Volt / 60 Hz <b>pneumatical:</b> d600 = 600 Watt at 6 bar compressed air
<b>Performance</b>	<b>delivery rate</b> max. 150 l/min <b>delivery head</b> max. 27 mWS <b>viscosity</b> max. 700 mPas <b>new: also with foot valve for completely empty barrels.</b>



## Modern multipurpose drum pumps

### Sealless drum pumps



<b>Applications</b>	<b>PP</b> for aggressive liquids like acids, caustics, vegetable oils, paints ... <b>PVDF</b> highly aggressive liquids like concentrated or mixed acids, ... <b>SS</b> acids, caustics, fruit-juices, milk, paints, thin-bodied oils, ...
<b>Pump tubes</b>	<b>tube:</b> polypropylene ( <b>PP</b> ), polyvinylidene fluoride ( <b>PVDF</b> ), stainless steel ( <b>SS</b> ) <b>seal:</b> sealless <b>immersion depth:</b> 700, 1000, 1200 mm and special immersion depth
<b>Drive motors</b>	<b>electrical:</b> p310 = 520 Watt, 230 Volt / 50 Hz, 115 Volt / 60 Hz p400 = 850 Watt, 230 Volt / 50 Hz, 115 Volt / 60 Hz <b>pneumatical:</b> d600 = 600 Watt at 6 bar compressed air
<b>Performance</b>	<b>delivery rate</b> max. 150 l/min <b>delivery head</b> max. 27 mWS <b>viscosity</b> max. 800 mPas

## For toxic liquids

### Drum pumps with magnetic coupling ...



<b>Applications</b>	suitable for pumping toxic, gaseous and hazardous liquids due to being hermetically sealed with no leakage.
<b>Pump tubes</b>	<b>tube:</b> polypropylene ( <b>PP</b> ), stainless steel ( <b>SS</b> ) <b>immersion depth:</b> 700, 1000, 1200 mm and special immersion depth
<b>Drive motors</b>	<b>electrical:</b> p310 = 520 Watt, 230 Volt / 50 Hz, 115 Volt / 60 Hz p400 = 850 Watt, 230 Volt / 50 Hz, 115 Volt / 60 Hz <b>pneumatical:</b> d600 = 600 Watt at 6 bar compressed air
<b>Performance</b>	<b>delivery rate</b> max. 150 l/min <b>delivery head</b> max. 22 mWS <b>viscosity</b> max. 50 mPas



# For each problem the right solution.

## For inflammable liquids

### Explosion-proof drum pumps in stainless steel



<b>Applications</b>	<b>SS</b> inflammable liquids according to VbF	
<b>Pump tubes</b>	<b>tube:</b> stainless steel ( <b>SS</b> ) <b>seal:</b> mechanical seal or sealless <b>immersion depth:</b> 700, 1000, 1200 mm and special immersion depth	
<b>Drive motors</b>	<b>electrical:</b> Ex700 = 700 Watt, 230 Volt / 50 Hz (ATEX) <b>pneumatical:</b> d600 = 600 Watt at 6 bar compressed air (ATEX)	
<b>Performance</b>	<b>delivery rate</b> max. 150 l/min <b>delivery head</b> max. 17 mWS <b>viscosity</b> max. 600 mPas	<b>new: also with foot valve for completely empty barrels.</b>



## For mixed liquids

### Mixing drum pumps in PP and stainless steel



<b>Applications</b>	<b>PP</b> aggressive emulsions, dispersions and suspensions <b>SS</b> paints and lacquers and other mixed and inflammable liquids	
<b>Pump tubes</b>	<b>tube:</b> polypropylene ( <b>PP</b> ) or stainless steel ( <b>SS</b> ) <b>seal:</b> sealless <b>immersion depth:</b> 700, 1000, 1200 mm and special immersion depth	
<b>Drive motors</b>	<b>electrical:</b> p310 = 520 Watt, 230 Volt / 50 Hz, 115 Volt / 60 Hz p400 = 850 Watt, 230 Volt / 50 Hz, 115 Volt / 60 Hz <b>explosion-proofed:</b> Ex700 = 700 Watt, 230 Volt / 50 Hz, 115 Volt / 60 Hz (ATEX) <b>pneumatical:</b> d600 = 600 Watt at 6 bar compressed air	
<b>Performance</b>	<b>delivery rate</b> max. 145 l/min <b>delivery head</b> max. 21 mWS <b>viscosity</b> max. 800 mPas	



## GLP25 - for many applications

### The innovative and mobile laboratory / industry pump



Click-joint

<b>Applications</b>	<b>general:</b> non inflammable liquids, acids and basis low concentrated, fluids of medium viscosity (colours, emulsions, dispersions, suspensions, oils) <b>extra liquids:</b> inflammable liquids when ATEX is not required (special laboratory conditions) pumping heavy and viscous liquids only in small quantities, motor temperature is limited	
<b>Motor</b>	<b>electric:</b> max. 160 W, 230 Volt / 50 Hz	
<b>delivery rate</b>	0 - 30 l/min with discharge tube	
<b>pump units</b>	<b>wetted materials:</b> PP, Stainless Steel, FKM <b>length of tube:</b> 500, 700, 1000 mm	



different container sizes



discharge tube, nozzle



## For slightly viscous liquids

### Feed-screw drum pumps in PP und stainless steel





<b>Applications</b>	<b>PP</b> aggressive medium-viscosity liquids and paints, vegetable oils, cosmetics, .... <b>SS</b> paints, lacquers, fruit-juices, oils, vegetable oils, cosmetics, foods, ....
<b>Pump tubes</b>	<b>tube:</b> polypropylene (PP) or stainless steel (SS) <b>seal:</b> mechanical seal or sealless <b>immersion depth:</b> 700, 1000, 1200 mm and special immersion depth
<b>Drive motors</b>	<b>electrical:</b> p400 = 850 Watt, 230 Volt / 50 Hz, 115 Volt / 60 Hz, (universal motor) pd500 = 0,55 kW, single 230 V / 50 Hz or three-phase 400 V / 50 Hz <b>pneumatical:</b> d600 = 600 Watt at 6 bar compressed air
<b>Performance</b>	<b>delivery rate</b> max. 115 l/min <b>delivery head</b> max. 14 mWS <b>viscosity</b> max. 1500 mPas

**New connection technology:** metal replaces plastic, robust for use in harsh environments

## For medium-viscosity liquids

### Eccentric screw pump SB stainless steel for big capacity



<b>Application</b>	big quantities, often mobile use, for easy use oils, soaps, glycerin, glue, foods	
<b>Pump tubes</b>	<b>tube:</b> stainless steel (SS) <b>stator:</b> PTFE <b>rotor:</b> stainless steel <b>immersion depth:</b> 100mm, 1100mm, special length on demand	
<b>Drive motors</b>	Quick change coupling system with safety bracket (SB) 1-phase induction motor 230 V, 0,37 kW, 1400 rpm 3-phase induction motor 400 V, 0,37 kW, 1400 rpm	
<b>Performance</b>	<b>delivery rate:</b> 4 -75 l/min <b>delivery head:</b> 2 - 50 bar <b>viscosity:</b> bis 5000 mPas	

with new frequency inverter

## For high-viscosity liquids

### Eccentric screw drum pumps in stainless steel



<b>Applications</b>	for pumping high-viscosity liquids like resin, paints, lacquers, glue, oil, soap, shampoo, ointment, honey, sirup, tomato paste, fruit concentrate, molasse, glucose, ...
<b>Pump tubes</b>	<b>tube:</b> stainless steel (SS) <b>stators:</b> NBR-light, PTFE <b>seal:</b> mechanical seal or packing gland <b>immersion depth:</b> 1000 mm and special immersion depth
<b>Drive motors</b> other on demand	<b>rigid or quick release coupling</b> <b>electrical:</b> 0,37 - 1,5 kW, 700 or 900 rpm, 400 Volt / 50 Hz <b>pneumatical:</b> 0,5 - 1,1 kW, up to 1000 rpm at 6 bar compressed air
<b>Performance</b>	<b>delivery rate</b> max. 50 l/min <b>delivery head</b> max. 12 bar <b>viscosity</b> max. 100.000 mPas



**New ++ New ++ New ++ High pressure version:** grease, cremes, non flowable media  
**Performance:** delivery rate max. 15l/min, pressure max. 50 bar



# Advantages of grün-drum pumps

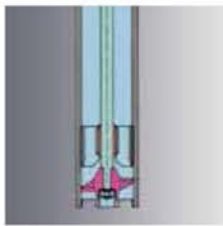


mechanical seal



sealless

- **no inner-tube**
- easily accessible shaft
- easy to clean
- solid shaft
- mechanical seal



singlestage design



multistage design

- **singlestage design**
- big discharge flows

- **multistage design**
- lower noise
- more stages possible, gives more pressure



feed-screw

- **with feed-screw**
- for medium-viscous liquids
- smooth pumping of liquids
- low noise with three-phase motor



quick release coupling



magnetic coupling

- **quick release coupling**
- speedy connection
- robust design
- rugged bow-gear coupling
- suitable for aggressive environments

- **magnetic coupling**
- hermetically sealed
- for gaseous and dangerous liquids
- no leakage



quick release coupling

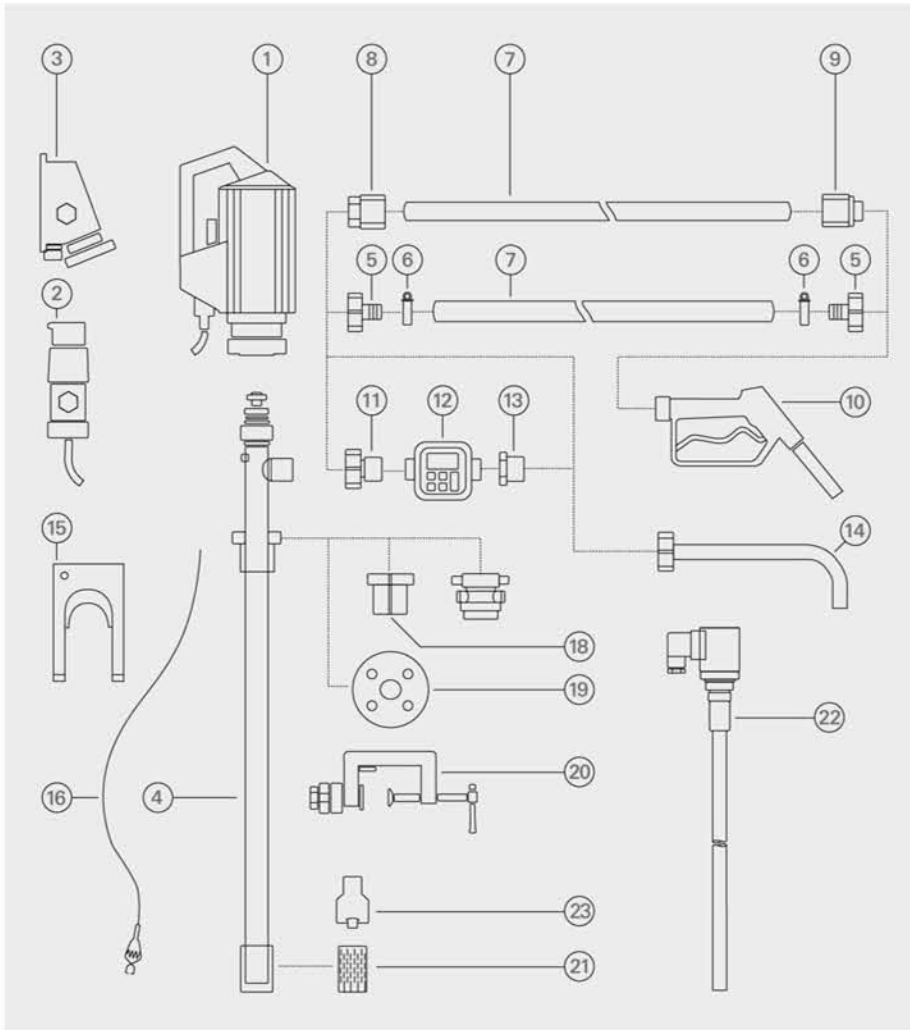


rigid connection

- **Eccentric screw barrel pump with quick release coupling**
- removable drive motor
- easy and safe handling with the separate pump tube
- no lifting device necessary
- it's possible to drive several pump tubes with only one motor

- **rigid connection** of drive motor and pump tube

## Accessories



- 1 Drive motor
- 2 Explosion-proof plug
- 3 Explosion-proof socket
- 4 Pump tube
- 5 Hose connector
- 6 Hose clamps
- 7 Hose
- 8 Hose fittings
- 9 Hose fittings
- 10 Nozzle
- 11 Flow meter connection
- 12 Flow meter
- 13 Reducing piece
- 14 Discharge spout
- 15 Wall bracket
- 16 Equipotential bounding cable
- 17 Emission proof drum adapter
- 18 Drum adapter
- 19 Installation flange
- 20 Clamping device
- 21 Foot strainer
- 22 Level switch
- 23 Foot valve



**MIXER (CHILE) LTDA.**

*Coloca la tecnología en sus manos*

Fonos: (56-2) 2 2946 2007 - (56-2) 2 2244 3718 - (56-2) 2 2244 40 37  
Mar del Plata 1908 Providencia - Santiago - Chile

Web: [www.mixerchile.cl](http://www.mixerchile.cl) / Mail: [info@mixerchile.cl](mailto:info@mixerchile.cl)



**grün-pumpen**

take out, what's in.